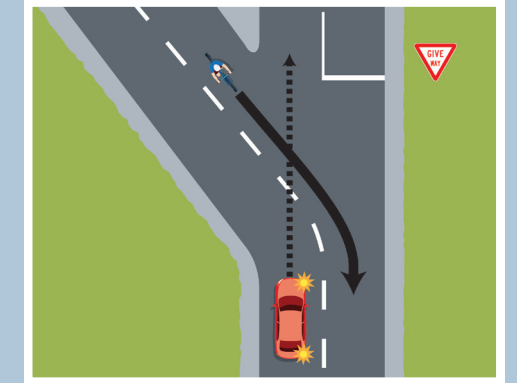
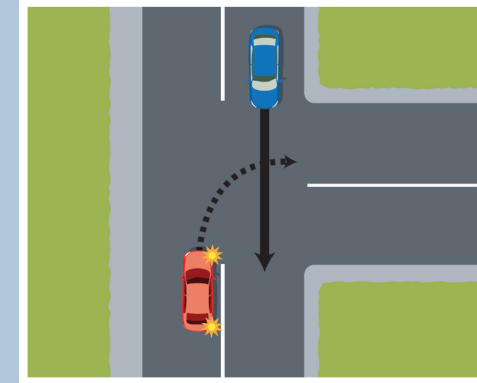
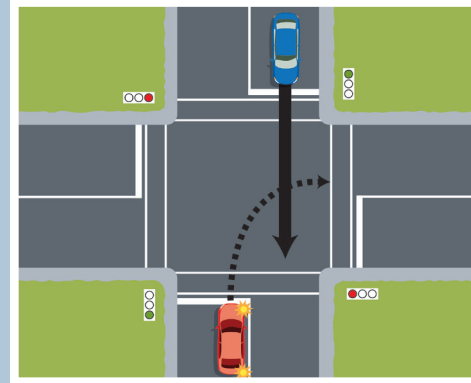


Give way rules summary

Road users must stop or give way as necessary at stop signs, give way signs and traffic signals.

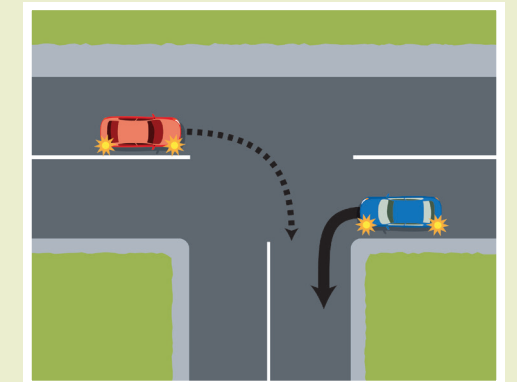
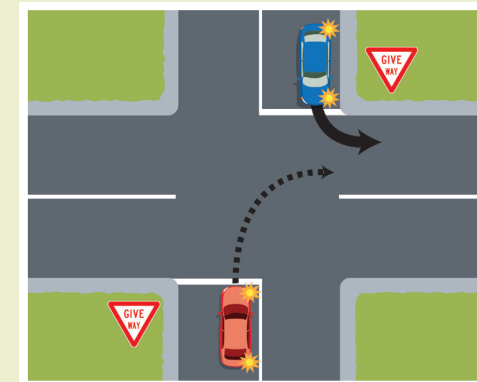
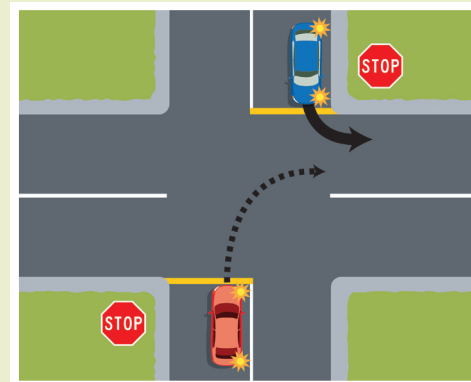
If you are turning, give way to vehicles not turning.

Note: if you are leaving the path of a marked centre line, you are deemed to be turning and must give way to vehicles that are following the centre line.

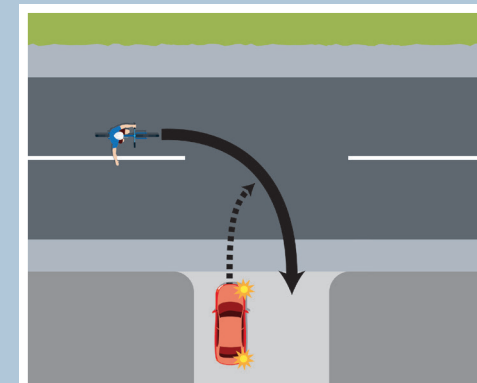
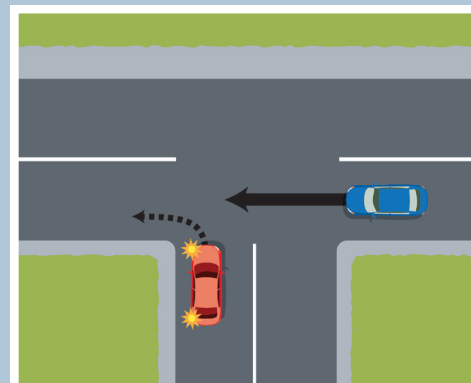


If you are turning right, give way to all vehicles coming towards you including those turning left.

Note: this applies if both vehicles are facing no signs or signals, or the same signs or signals.



At a T-intersection or driveway, traffic on a terminating road or driveway (bottom of the T) must give way to all traffic on a continuing road (top of the T).



In all other situations, give way to all vehicles coming from your right.

For example, at a crossroad controlled by traffic signals, when the signals have failed and all approaches have flashing yellow lights.

